

February 9<sup>th</sup>, 2020  
**Fifth Sunday**  
**after Epiphany**  
11:00 a.m.

*Warning! To enter into the life of this people of God is to encounter God's soul-challenging,  
life-changing, radicalizing love. Will you join us? Do you dare?*

## GATHER

PRELUDE

ST. CLEMENT

Richard Cummins

\*HYMN 12

**I Sing the Mighty Power of God**

ELLACOMBE

\*CALL TO WORSHIP

Amo Ngoepe

One: Who comes to this house today?

**Many: We come from the east, to celebrate our God  
who has created the rising sun and has given us a new day.**

One: Who comes to this place of worship?

**Many: We come from the north, to remember that the One who made us  
has also shaped the face of icy mountains and snow-swept valleys.**

One: Who enters into this place of sanctuary?

**Many: We come from the west, singing of our Maker's love and dancing  
with the red sun at our backs.**

\* *Indicates all who are able may stand*

One: Who gathers as the church today?

**Many: We come from the south, our voices rising with the desert winds  
as we praise the Giver of all life.**

One: Let us now join together as one body:

**Many: Worshipping God in spirit and in truth. Amen.**

—*Oklahoma Indian Missionary Conference*

\*A SIGN OF OUR UNITY AND RECONCILIATION

*We invite you to greet those around you,  
wishing them “peace” or “the peace of Christ.”*

WORDS OF WELCOME

Katherine A. Schofield

SOLO

He’s Got The Whole World In His Hands Margaret Bonds, *arr.*  
Adriana Repetto, *soprano*

He’s got the whole world in his hand...  
He’s got the whole world in his hand.

He’s got the wood and the waters in his hand...  
He’s got the sun and the moon right in his hand,  
He’s got the whole world in his hand.  
He’s got the birds and the bees right in his hand...  
He’s got the beasts of the field right in his hand,  
He’s got the whole world in his hand.

He’s got you and me right in his hand...  
He’s got everybody in his hand,  
He’s got the whole world in his hand.

## ATTEND

SCRIPTURE

Genesis 2.8-9, 15-17; 3.6-7

Leanne Li

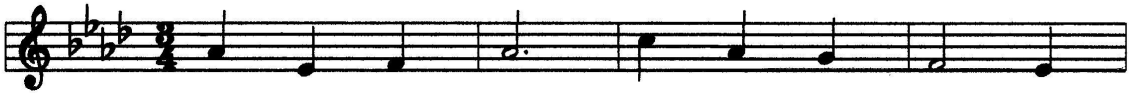
One: The LORD God planted a garden in Eden, in the east;  
and there he put the man whom he had formed.

**Many: Out of the ground the LORD God made to grow every tree  
that is pleasant to the sight and good for food, the tree of life  
also in the midst of the garden, and the tree of the knowledge  
of good and evil.**





## EARTH AND ALL STARS



- |                            |                  |                |
|----------------------------|------------------|----------------|
| 1. Earth and all stars!    | Loud rush - ing  | plan - ets!    |
| 2. Hail, wind and rain!    | Loud blow - ing  | snow - storms! |
| 3. Trum - pet and pipes!   | Loud clash - ing | cym - bals!    |
| 4. En - gines and steel!   | Loud pound - ing | ham - mers!    |
| 5. Class - rooms and labs! | Loud boil - ing  | test tubes!    |
| 6. Know - ledge and truth! | Loud sound - ing | wis - dom!     |



Sing to the Lord a new song!



- |                            |                  |             |
|----------------------------|------------------|-------------|
| 1. Oh, vic - tor - ry!     | Loud shou - ting | na - tions! |
| 2. Flow - ers and trees!   | Loud rust - ling | dry leaves! |
| 3. Harp, lute, and lyre!   | Loud hum - ming  | cel - los!  |
| 4. Lime - stone and beams! | Loud build - ing | work - ers! |
| 5. Ath - lete and band!    | Loud cheer - ing | peo - ple!  |
| 6. Daugh - ter and son!    | Loud pray - ing  | mem - bers! |



**Refrain** Sing to the Lord a new song!



God has done mar - vel - ous things!



We will sing prai - ses with a new song!

## Notes on Today's Music

*from* MITCHELL CRAWFORD

February is Black History Month, a time when our music should reflect the many and varied contributions of African American composers and arrangers to the repertory of sacred music, and to celebrate musical forms (i.e., the spiritual) and styles (i.e., Jazz) that arose from within African American communities. Were we only to feature the music of African Americans during February, it would be the very definition of tokenism; however, Old South's music program embraces an intentionally broad reach, and we are proud to showcase works that highlight diversity throughout the year.

How then should we honor Black History Month? My own inclination is to offer works which allow us to absorb and appreciate the *development* of the African American Spiritual, a genre I consider to be one of the greatest and most significant within American music. Thus, during February, the Festival Choir will offer each week arrangements which, collectively, allow us to chart the ongoing development of this multifaceted repertory.

**Margaret Bonds** (1913–1972) was among the earliest African-Americans to achieve prominence as both a composer and performer. Sadly, Bonds is little remembered today (and primarily for her partnerships with the poet Langston Hughes and soprano Leontyne Price), though she was quite well known during her lifetime. As a pianist, Bonds performed with an array of ensembles, appearing with the Chicago Symphony Orchestra in 1933. A large portion of Bond's compositional output are vocal solos, which comprise both sacred and secular music. In her spiritual arrangements for solo voice (of which we hear one of the most famous today), one can clearly chart the influence of Harry T. Burleigh and the "first generation" of spiritual arrangers.

It is hard to overstate the importance of **Henry Thacker ("Harry") Burleigh** (1866–1949) to the development of the spiritual as a genre within western music. Burleigh was a composer, arranger, and professional singer renowned for his baritone voice. It is perhaps the last of these — Burleigh's vocal training in the classical tradition — that made him such an effective conveyer of the spiritual to audiences otherwise ignorant of the rich variety the genre comprised. His arrangements for solo voice cast the spiritual in the guise of the western Art Song — softening the rhythmic and harmonic contours of the melodic material, adding simple piano accompaniments — allowing them to be easily absorbed by new audiences eager to experience this music. A few of Burleigh's solos were later adapted into arrangements for full choir; among these is the spectacular setting of *My Lord, What a Morning* we hear today.

Today's reader, **Leanne Li** is a Postdoctoral Fellow at MIT. She holds a Ph.D. in cancer biology from École Polytechnique Fédérale de Lausanne, 2014; M.D., National Taiwan University, 2008. She studies fundamental mechanisms of cancer progression to facilitate therapeutic advancements. A former deacon of Old South Church, Leanne will relocate to London in September to become a Group Leader at the prestigious Francis Crick Institute.



Join us for **Refreshments & Fellowship**  
in the Gordon Chapel following the Postlude.

**Close-Up**, a 20-minute tour of the Sanctuary,  
begins following worship at the front of the Sanctuary.  
Led by docent Mary Hunter.

The flowers today are given in celebration  
of the birthday of **Elinor Lockwood Yeo**  
by her loving family.

### **WELCOME TO OLD SOUTH CHURCH**

For LARGE print bulletins or children's bulletins please ask an Usher.  
The Chapel has full audio of the service if you need to stretch your legs.

### **HEARING ASSISTANCE DEVICES**

Our hearing loop works directly with devices equipped with a "T-Coil." The sound is best if you sit further inside the pews, away from the aisles. The loop does not work in the upper galleries. If you would like to borrow a device paired with our system, please ask an usher.

### **GARAGE PARKING VALIDATIONS**

We have arrangements for discounted parking with two nearby garages for Old South Church worship or church business (excluding weddings and concerts). Check **<https://www.oldsouth.org/your-first-visit>** or see the front desk.

### **OTHER INFORMATION ABOUT OLD SOUTH**

Check out the church website at **[www.oldsouth.org/calendar](http://www.oldsouth.org/calendar)** for a calendar of events, and the general website **[www.oldsouth.org](http://www.oldsouth.org)** for more on the history and other information about this storied ship of faith!

CCLI #2802138

## OLD SOUTH CHURCH IN BOSTON MINISTERS, OFFICERS, & STAFF

Nancy S. Taylor, *Senior Minister* ❖ James W. Crawford, *Senior Minister Emeritus*  
Katherine A. Schofield, *Interim Associate Minister* ❖ Shawn M. Fiedler, *Acting Associate Minister*  
Mitchell Crawford, *Minister of Music*  
Kate Nintcheu, *Director, Children & Family Ministries*  
Donald A. Wells, *Theologian in Residence* ❖ June R. Cooper, *Theologian in the City*  
Amo Ngoepe, *Pastoral Resident*  
David Story, *Executive Assistant to the Senior Minister* ❖ Ken Orth, *Healing Worship Minister*  
Martha Schick, *Youth & Young Adult Ministries Leader*  
Carolyn Davis, *Director, Old South Preschool*  
George Sargeant, *Associate Organist & Choirmaster*  
Tim Harbold, *Director, Gospel Choir* ❖ Willie Sordillo, *Director, Jazz Worship Music*  
Peter Coulombe, *Director, Old South Ringers* ❖ Amy Budka, *Children's Music Leader*  
Deb Washington, *Moderator* ❖ Rob Gabler, *Clerk* ❖ Bill Bulkeley, *Treasurer*  
Randy Billings, *Chair, Board of Trustees*  
Stephanie LaShoto & Ralph Watson, *Senior Deacons* ❖ Vicki Newman, *Pledge Secretary*  
Helen McCrady, *Senior Church Administrator* ❖ Jamie Garuti, *Communications Administrator*  
Linda Van Praet, *Accounting & Human Resources* ❖ David Albaugh, *Building Manager*  
Allison Albaugh, *Wedding Coordinator* ❖ Emily Ross, *Archivist* ❖ Rebecca Pasipanodya, *Administrative Assistant*  
Elias Perez, *Senior Sexton* ❖ Ozo Nwodo, Richard Serebour, & David Brode, *Sextons*  
Corey Spence, Rubia Reyes, & Shirley Bivins *Receptionists*

### A NOTE ON THE INCLUSIVE DIMENSIONS OF GOD'S GRACE

Old South Church in Boston, in the name of its host, Jesus Christ, and in the spirit of Christ's invitation carved into the stone of this church's portico, "Behold I Set Before You an Open Door," welcomes all who seek to know God. Following the One who we believe is Sovereign and Savior, we affirm that each individual is a child of God, and recognize that we are called to be like one body with many members, seeking with others of every race, ethnicity, creed, class, age, gender, marital status, physical or mental ability, sexual orientation, gender identity, and gender expression to journey together toward the promised realm of God. We invite everyone to join in the common life and mission of our reconciling community through participation and leadership in this congregation, and by fully sharing in the worship, rites and sacraments of this church. As we all move forward with the work of this church, we commit ourselves to making justice and inclusivity a reality in this congregation and in the world. On the threshold of Christ's open door, we rely upon the healing, unconditional nature of God's love and grace to be our help and guide.